



VAREC 220 SERIES ROOF MANWAY COVER

The 220 Series is designed for use on tanks where quick and easy personnel access is required



FEATURES

- Rugged yet lightweight and easy to handle.
- Cast iron base and cover with brass yokes and wing nuts as standard.
- Quick opening cast wing nuts facilitate rapid entry to the tank.
- Extra heavy, compliant cover insert ensures a gas-tight seal and non-sparking operation.
- Designed to allow impregnated flax cover inserts and flanged bases for mounting.
- 18" and 20" (450 and 500 mm) sizes incorporate a rigid fabricated steel center beam for even load distribution of seating surfaces.
- 24" - 36" (600 - 900 mm) sizes have multiple hinged lugs and wing nuts for even load distribution.
- Large 36" (900 mm) size allows quick and easy tank access to personnel equipped with breather packs.

GENERAL APPLICATION

The 220 Series roof manway covers are designed for quick, easy access to storage tanks. They are designed for working pressures up to 1 psig (.07 bar).

TECHNICAL DATA

Materials: 356 T6 aluminum, carbon steel, stainless steel
Sizes: 18" to 36" (450 to 900 mm)
Connections: Base drilled for bolting
Undrilled steel base for welding (optional)

VAREC 220 SERIES ROOF MANWAY COVER SPECIFICATIONS

Sizes

18", 20", 24", 30", 36"

Connections

Base is drilled for bolting
Steel base for welding only (undrilled)

MATERIALS OF CONSTRUCTION

Base	Cover
Cast iron	Cast iron
Aluminum	Aluminum
Carbon steel	Cast iron
316 Stainless steel	316 Stainless steel
Wing nuts	Insert
Brass	Tallow treated flax insert ⁽¹⁾

NOTE

1. Consult your sales representative for other materials.

DIMENSIONS, INCHES AND POUNDS (millimeters and kilograms)

Size code		18	20	24	30	36
A	Opening size	17 ³ / ₈ (451)	19 ⁷ / ₈ (505)	24 (610)	30 ¹ / ₄ (768)	35 ¹³ / ₁₆ (910)
B	Flange diameter	23 (584)	26 (660)	33 ¹ / ₄ (845)	36 ¹ / ₂ (927)	45 ¹ / ₂ (1156)
C	Diameter bolt circle	21 ¹ / ₄ (540)	23 ¹ / ₄ (591)	30 ¹ / ₄ (768)	33 ³ / ₄ (857)	42 ¹ / ₄ (1073)
D	Height	7 ⁷ / ₈ (200)	8 (203)	6 ¹ / ₈ (156)	6 ¹ / ₈ (156)	6 ¹ / ₂ (165)
	Number of holes	28	32	28	36	42
	Diameter of holes	⁹ / ₁₆ (14)	⁹ / ₁₆ (14)	¹¹ / ₁₆ (17)	¹¹ / ₁₆ (17)	⁷ / ₈ (22)
	Number of lugs	1	1	3	4	4
	Approximate shipping weight	100 (45)	130 (59)	200 (91)	275 (125)	375 (170)

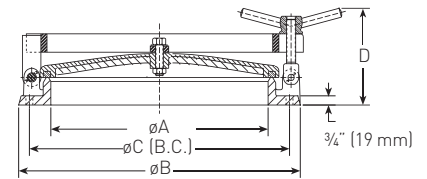
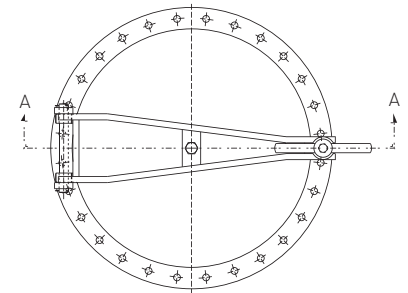
Shipping weights shown for iron construction

SELECTION GUIDE

Example:	220	36	22
Model			
220	Roof manway cover		
Size			
18	18"	30	30"
20	20"	36	36"
24	24"		
Material			
11	Aluminum base and cover with flax insert		
22	Iron base and cover with flax insert		
32	Steel base and iron cover with flax insert		
66	Stainless steel base and cover with flax insert		

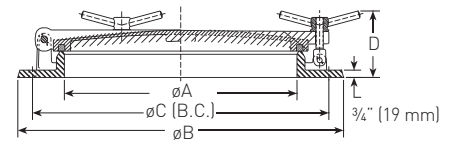
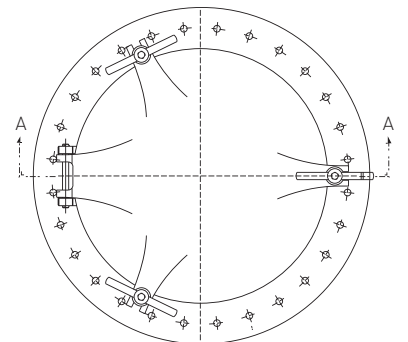
Example: 36" Model 220 roof manway cover, iron base and cover with flax insert.

18" AND 20" SIZES



Section A - A

24", 30" AND 36" SIZES



Section A - A